

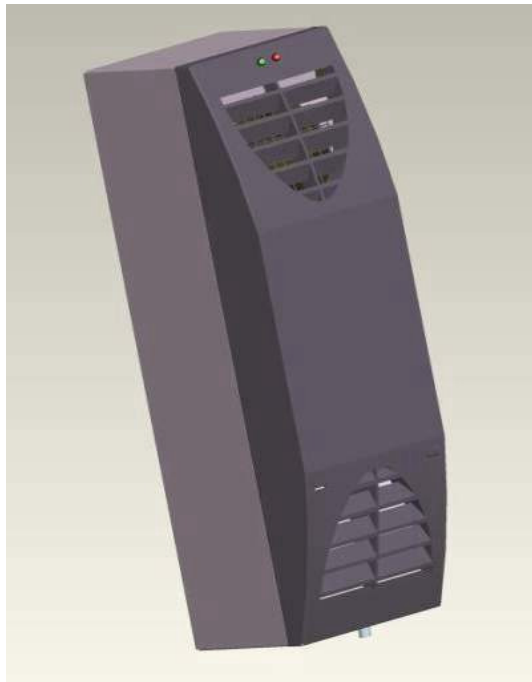
# Rittal Thermoelectric Cooler<sup>®</sup> (RTC<sup>®</sup>)



Made in Germany

English

## Brief instruction for changing setpoint and alarm setting



# 1 | Summary

1.	Summary.....	2
2.	Installation of communication interface.....	3
3.	Changing setpoint (internal enclosure temperature).....	6
4.	Changing alarm temperature.....	8
5.	Notice.....	9
6.	Service address.....	10

## 2 | Installation of communication interface

1. Attach the air conditioner to the power supply.
2. Connect an USB cable (Type B/A) between computer (operating system XP, 2000 or Vista) and RTC cooling unit.

English

After setting up the connection, the „assistant for searching of new hardware“ starts automatically.

3. Choose continue at the “assistant for searching new hardware.”
4. Please confirm: „Search for a compatible driver for the unit”
5. Choose „another source for data.”
6. Choose path to the **Rittal\_GmbH.inf** file and open it.  
[http://rinet4.rittal.de/downloads/pm\\_info/dateien/PM3/DE/PM\\_SK\\_IE/Produkte/Peltier\\_ThermoelectricCooler/RTC\\_SetupInfo.zip](http://rinet4.rittal.de/downloads/pm_info/dateien/PM3/DE/PM_SK_IE/Produkte/Peltier_ThermoelectricCooler/RTC_SetupInfo.zip)
7. Accept driver.

The communication interface has been installed successfully when „completing the assistant“ pops up.

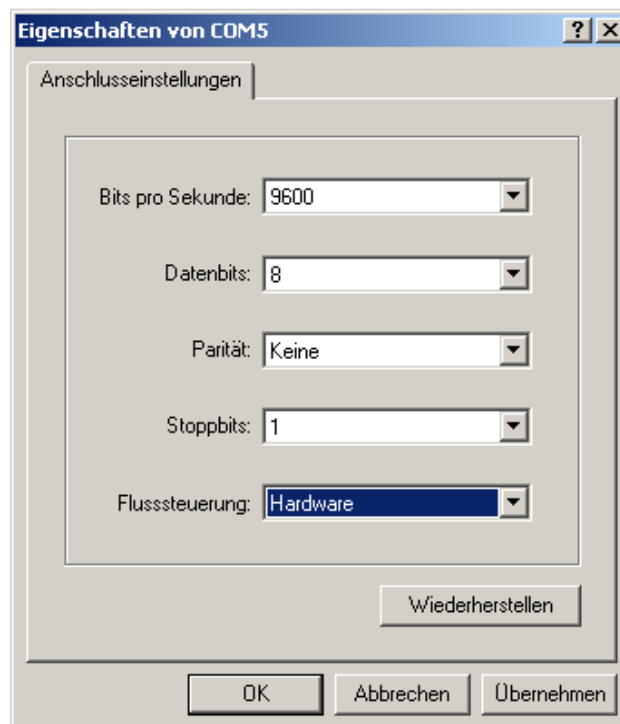
## 2 | Installation of communication interface

For declaration device interface (Com-Interface) open program device manager and let advise the interface (for example Com 5) at “communications (Com+LPT)” .

Start the program HyperTerminal at accessories/communication and enter an optional (e.g. RTC) name in the start window and confirm with OK.

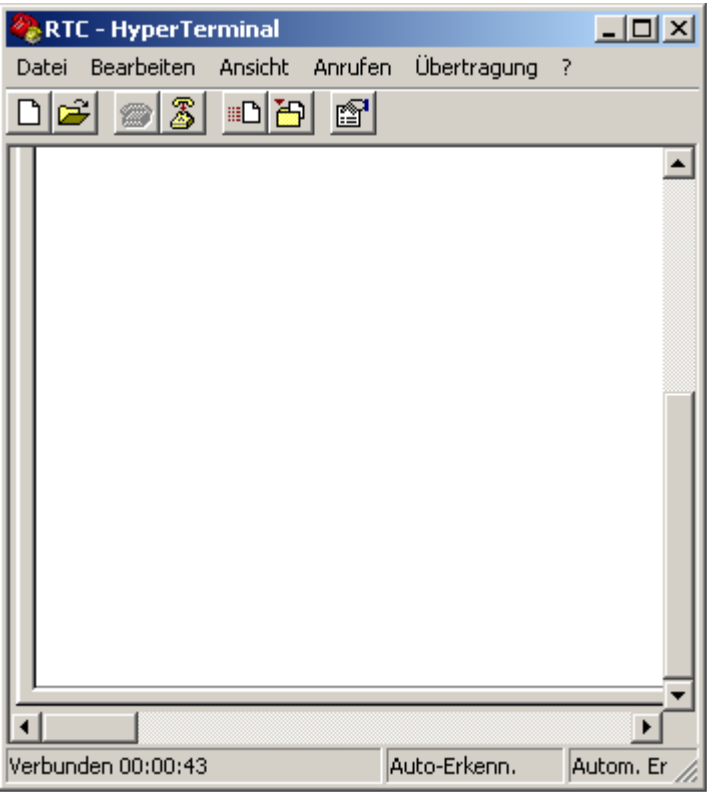
Choose at the window „connect with“ the menu item „connect via“ the determined description of the Com-Interface (for example Com 5) and confirm with OK.

At the features window you must adjust the following data.



confirm with OK.

The communication window appears



Please exert the return button

With the message:

or	
<b>REV v1.5 – HW r0.3</b> <b>Name: TE-COOLER</b> <b>Ser#: xy</b> <b>Type: xy</b> <b>TE-COOLER&gt;</b>	<b>TE-COOLER&gt;</b>

The communication with the air conditioner is established.

### 3 | Changing setpoint value for the required internal enclosure temperature

**Enter password:**

TE-COOLER>**login** (Confirm with enter)

Password:**admin**

(Text does not appear with entering, confirm with enter)

Unit answers in the following way:

Hallo Admin

OK

TEK>

Instruction for changing internal enclosure temperature setpoint

**set tc xy**                      xy: required internal enclosure temperature in range of 20...55 °C.

enter and confirm with return

Example:

set tc 37 (e.g. required internal enclosure temperature: 37 °C)

The setting of the temperature is complete with the following reply of the RTC unit:

**tc = xy**

**OK**

Example:

tc = 37

OK (Setpoint value of 37 °C adjusted)

Afterwards the connection between computer and RTC unit can be disconnected.

## 4 | Changing alarm temperature

### Instruction

**set dtc xy**                      xy: required temperature difference between alarm temperature and setpoint temperature at the range of 2...15K

Enter and confirm with return.

Example:

set dtc 5    (required alarm temperature 5K above internal enclosure temperature (setpoint value))

The setting of the alarm temperature is complete with the following reply of the RTC unit:

**dtc = 5**  
**OK**

Example:

dtc = 5  
OK            (alarm temperature 5K above internal enclosure temperature (setpoint value)).

For exit the communication program choose „exit program“  
Afterwards the connection between computer and RTC unit can be disconnected.



## 5 | Notes

## 6 | Service addresses



English

### Rittal Service International (RSI)

Deutschland Europa	☎ @	+49 (0)27722 – 505 – 1855 service@rittal.de
Nord-Amerika	☎ @	+1 800 477 4000 OPTION 3 service@rittal.us
Süd-Amerika	☎ @	+55 11 36 22 23 77 service@rittal.com.br
China	☎ @	+86 800 820 0866 service@rittal.cn
Indien	☎ @	+91 80 22 890 783 service@rittal-india.com

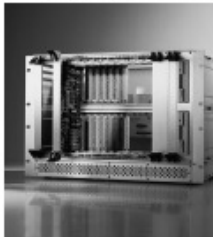
Rittal GmbH & Co. KG, Postfach 1662, D-35726 Herborn  
Telefon: +49(0)2772 505-0  
Telefax: +49(0)2772 505-2319  
eMail: [info@rittal.de](mailto:info@rittal.de)  
Internet: [www.rittal.de](http://www.rittal.de)



Schaltschrank-Systeme  
Industrial Enclosures  
Coffrets et armoires électriques  
Kastsystemen  
Apparatskåpssystem  
Armadi per quadri di comando  
Sistemas de armarios  
インダストリアル エンクロージャー



Stromverteilung  
Power Distribution  
Distribution de courant  
Stroomverdeling  
Strömfördelning  
Distribuzione di corrente  
Distribución de corriente  
分電・配電システム



Elektronik-Aufbau-Systeme  
Electronic Packaging  
Electronique  
Electronic Packaging Systems  
Electronic Packaging  
Contenitori per elettronica  
Sistemas de montaje para la electrónica  
エレクトロニクス パッケージシステム



System-Klimatisierung  
System Climate Control  
Climatisation  
Systeemklimatisering  
Systemklimatisering  
Soluzioni di climatizzazione  
Climatización de sistemas  
温度管理システム



IT-Solutions  
IT Solutions  
Solutions IT  
IT-Solutions  
IT-lösningar  
Soluzioni per IT  
Soluciones TI  
ITソリューション



Communication Systems  
Communication Systems  
Armoires outdoor  
Outdoor-behuizingen  
Communication Systems  
Soluzioni outdoor  
Sistemas de comunicación  
コミュニケーションシステム

Rittal GmbH & Co. KG · Postfach 1662 · D-35726 Herborn  
 Telefon +49(0)2772 505-0 · Telefax +49(0)2772 505-2319 · eMail: info@rittal.de · www.rittal.de



**Umschalten auf Perfektion** **RITTAL**